



**Adattatori**

**Per oleodinamica**



Tipologia	Pagina	Tipologia	Pagina
Nipples gas	5	Vite forata metrica	14
Nipples metrico	5	Vite forata doppia metrica	15
Nipples conico-conico	5	Occhio saldare gas	15
Nipples conico-cilindrico	6	Occhio saldare metrico	15
Nipples gas-npt	6	Occhio filettato metrico/gas	15
Nipples M-F girevole	6	Occhio filettato metrico	16
Nipples ridotto M-F girevole	6	Curva 90° M-F girevole gas	16
Adattatore F-F girevole	7	Curva 90° M-F girevole metrica	16
Adattatore F-F girevole spinato	7	Curva 45° M-F girevole gas	16
Nipples passaparete	7	Curva 45° M-F girevole metrica	16
Prolunga M-M	7	Curva 90° F-F girevole gas	17
Prolunga F-F	8	Curva 90° F-F girevole metrica	17
Nipples ridotto gas	8	Curva 45° F-F girevole gas	17
Nipples ridotto gas-metrico	9	Curva 45° F-F girevole metrica	17
Nipples ridotto metrico	9	Nipples Jic-gas	18
Tappo di riduzione M-F	10	Adattatore "T" M/F/M	18
Prolunga di riduzione M-F	10	Adattatore "T" M/M/F	18
Nipples saldare gas	11	Nipples 90° con-cil	18
Nipples saldare metrico	11	Adattatore 90° M-F gas	19
Borchia saldare	11	Adattatore 90° M-F gas conico	19
Tappo M gas	12	Adattatore 90° F-F fissa	19
Tappo M metrico	12	Adattatore "T" M/M/M gas	19
Tappo F gas	12	Adattatore "T" F/F/F girevole gas	20
Prolunga M-F gas	13	Adattatore "T" F/F/F fissa gas	20
Prolunga M-F metrica	13	Adattatore croce F/F/F/F	20
Borchia saldare gas	13	Semiflange SAE 3000/6000	21
Borchia saldare metrica	14	Flange filettate SAE 3000/6000	22
Vite forata gas	14	Flange saldare SAE 3000/6000	23
Vite forata doppia gas	14		



**PRINCIPALI TIPI DI FILETTATURE DEI RACCORDI**

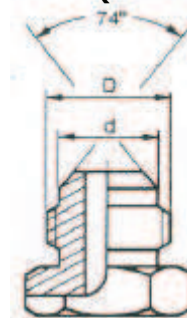
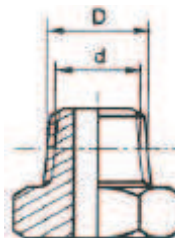
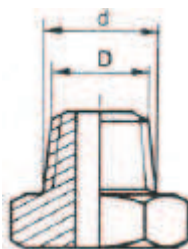
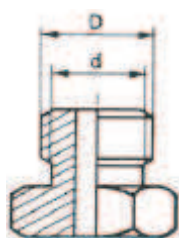
**METRICO**

**GAS CILINDRICO**

**GAS CONICO**

**NPT (ASA B2.1)**

**UNF e UN (ASA B1.1)**



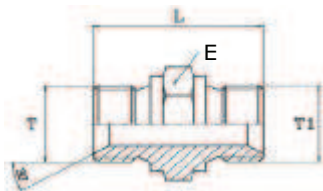
M 8x1	8,00	6,70	G 1/8-28	9,73	8,60	Gc 1/8-28	9,73	8,60	1/8-27	9,98	10,29	7/16 -20UNF	11,07	10,00
M10x1	10,00	8,70	G 1/4-19	13,16	11,50	Gc 1/4-19	13,16	11,50	1/4-18	13,26	13,72	1/2 -20UNF	12,70	11,60
M12x1,5	12,00	10,05	G 3/8-19	16,66	14,90	Gc 3/8-18	16,66	14,90	3/8-18	16,68	17,15	9/16 -18UNF	14,25	13,00
M14x1,5	14,00	12,05	G 1/2-14	20,96	18,60	Gc 1/2-14	20,96	18,60	1/2-14	20,71	21,34	3/4 -16UNF	19,00	17,60
M16x1,5	16,00	14,05	G 5/8-14	22,91	20,60	Gc 3/4-14	26,44	24,10	3/4-14	26,03	26,67	7/8 -14UNF	22,17	20,50
M18x1,5	18,00	16,05	G 3/4-14	26,44	24,10	Gc 1 -11	33,25	30,30	1 1/2-11	32,59	33,40	1 1/16-12UN	26,95	25,00
M22x1,5	22,00	20,05	G 1 -11	33,25	30,30	Gc1 1/4-11	41,91	38,90	1 1/4-11,5	41,31	42,16	1 5/16-12UN	33,30	31,30
M26x1,5	26,00	24,05	G1 1/4-11	41,91	38,90	Gc1 1/2-11	47,80	44,90	1 1/2-11,5	47,39	48,26	1 5/8 -12UN	41,22	39,20
M30x1,5	30,00	28,05	G1 1/2-11	47,80	44,90	Gc 2 -11	59,61	56,70	2 1/2-11	59,40	60,33	1 7/8 -12UN	47,57	45,60
M38x1,5	38,00	36,05	G1 3/4-11	53,75	50,80	Gc2 1/2-11	75,18	72,20	2 1/2-8	71,62	73,03	2 1/2 -12UN	63,45	61,50
M45x1,5	45,00	43,05	G 2 -11	59,61	56,70									
M52x1,5	52,00	50,05	G2 1/4-11	65,72	62,80									
M65x2	65,00	62,40												





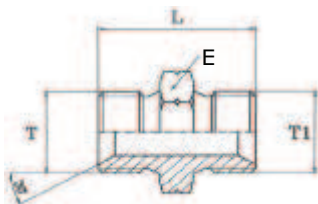
## NIPPLES DI GIUNZIONE GAS

T	T1	L	L1	E	E1	D	d	P max	Codice
1/8	1/8	25,0		14				425	U1501010100
1/4	1/4	29,0		19				425	U1501013130
3/8	3/8	34,0		22				400	U1501017170
1/2	1/2	37,5		27				350	U1501021210
5/8	5/8	42,0		30				300	U1501023230
3/4	3/4	42,0		32				250	U1501027270
1	1	51,0		41				250	U1501033330
1.1/4	1.1/4	57,0		50				200	U1501042420
1.1/2	1.1/2	60,0		55				175	U1501048480
2	2	71,0		70				150	U1501051510
2.1/2	2.1/2	65,0		85				150	U1501063630
3	3	65,0		100				100	U1501076760



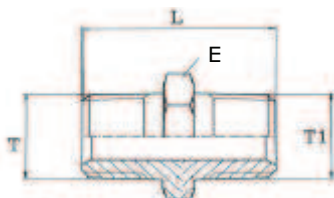
## NIPPLES DI GIUNZIONE METRICO

T	T1	L	L1	E	E1	D	d	P max	Codice
M10X1	M10X1	25,0		14				425	U1501110100
M12X1.5	M12X1.5	29,0		17				425	U1501112120
M14X1.5	M14X1.5	31,0		19				400	U1501114140
M16X1.5	M16X1.5	35,0		22				350	U1501116160
M18X1.5	M18X1.5	36,0		24				350	U1501118180
M20X1.5	M20X1.5	38,0		27				350	U1501120200
M22X1.5	M22X1.5	38,0		27				350	U1501122220
M24X1.5	M24X1.5	36,0		30				250	U1501124240
M26X1.5	M26X1.5	42,0		32				250	U1501126260
M30X1,5	M30X1,5	41,0		38				200	U1501130300



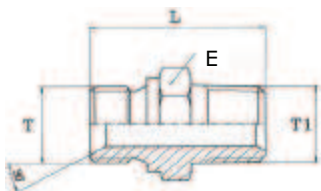
## NIPPLES DI GIUNZIONE CONICO-CONICO

1/8	1/8	25,0		12				350	U1501401010
1/8	1/4	30,5		14				350	U1501401013
1/4	1/4	35,0		14				350	U1501401313
1/4	3/8	35,0		17				250	U1501401317
3/8	3/8	35,0		17				250	U1501401717
3/8	1/2	40,5		22				225	U1501401721
1/2	1/2	45,0		22				225	U1501402121
1/2	3/4	47,0		27				200	U1501402127
3/4	3/4	47,0		27				200	U1501402727
3/4	1	53,0		36				160	U1501402733
1	1	58,0		36				160	U1501403333
1.1/4	1.1/4	62,0		46				160	U1501404242
1.1/2	1.1/2	66,0		50				160	U1501404848
2	2	69,0		65				100	U1501405151



## NIPPLES DI GIUNZIONE CONICO-CILINDRICO

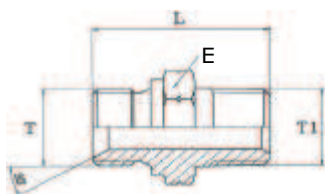
T	T1	L	L1	E	E1	D	d	P max	Codice
1/8	1/8	26,5		12				425	U1501610100
1/4	1/4	32,0		17				425	U1501613130
3/8	3/8	35,0		19				400	U1501617170
3/8	3/8	35,5		22				400	U1501617171
1/2	1/2	42,5		24				300	U1501621210
3/4	3/4	46,0		30				250	U1501627270
1	1	55,0		36				250	U1501633330
1.1/4	1.1/4	60,0		50				200	U1501642420
1.1/2	1.1/2	61,5		50				175	U1501648480
2	2	68,0		65				150	U1501651510



## NIPPLES DI GIUNZIONE GAS-NPT

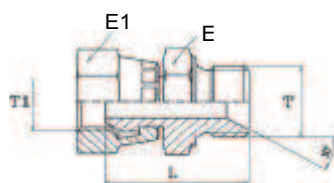
T	T1	L	L1	E	E1	D	d	P max	Codice
1/8-27	1/8-27	27,5		12				425	U1501710100
1/4	1/4-18	32,0		15				425	U1501713130
3/8	3/8-18	32,5		17				400	U1501717170
1/2	1/2	42,5		24				300	U1501721210
1/2	1/2	44,0		27				300	U1501721211
3/4	3/4	45,0		27				250	U1501727270
1	1	55,0		36				200	U1501733330
1-1/4-11	1.1/4	58,0		45				200	U1501742420
1.1/2	1.1/2	60,5		50				175	U1501748480
2	2	68,2		65				150	U1501751510

T1 NPT



## ADATTATORE M/F GIREVOLE

T	T1	L	L1	E	E1	D	d	P max	Codice
1/8	1/8	24,0		14	14			425	U1506010100
1/4	1/4	29,0		19	19			425	U1506013130
3/8	3/8	33,5		22	22			400	U1506017170
1/2	1/2	39,0		27	27			350	U1506021210
3/4	3/4	44,0		32	32			250	U1506027270
1	1	45,5		41	38			250	U1506033330



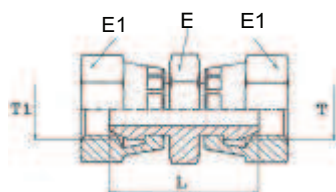
## ADATTATORE RIDOTTO M/F GIREVOLE

T	T1	L	L1	E	E1	D	d	P max	Codice
1/4	3/8	33,0		19	22			425	U1506213170
3/8	1/4	33,0		22	19			425	U1506217130
3/8	1/2	35,5		22	27			400	U1506217210
1/2	3/8	38,0		27	22			350	U1506221170
1/2	3/4	42,5		27	32			250	U1506221270
3/4	1/2	41,0		32	27			250	U1506227210
3/4	1	45,5		32	38			200	U1506227330
1	3/4	47,5		41	32			175	U1506233270



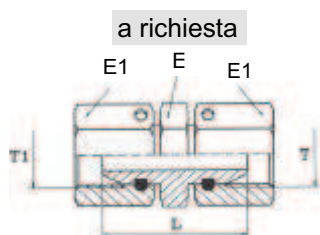


## ADATTATORE F/F GIREVOLE



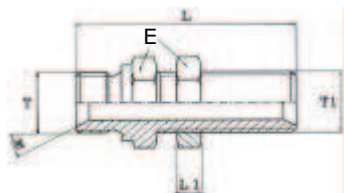
T	T1	L	L1	E	E1	D	d	P max	Codice
1/8	1/8	25,0		14	14			425	U1507010100
1/4	1/4	27,5		19	19			425	U1507013130
3/8	3/8	33,0		22	22			400	U1507017170
1/2	1/2	37,0		27	27			350	U1507021210
3/4	3/4	43,5		32	32			250	U1507027270
1	1	42,5		41	38			250	U1507033330

## ADATTATORE F/F GIREVOLE DADO SPINATO



T	T1	L	L1	E	E1	D	d	P max	Codice
1/4	1/4	30,0		19	19			425	U1507513130
3/8	3/8	33,0		22	22			400	U1507517170
1/2	1/2	36,0		27	27			350	U1507521210
3/4	3/4	44,0		32	32			250	U1507527270
1	1	46,0		38	38			250	U1507533330
1.1/4	1.1/4	52,0		50	50			200	U1507042420
1.1/2	1.1/2	57,0		55	55			175	U1507048480
2	2	54,0		70	70			150	U1507051510

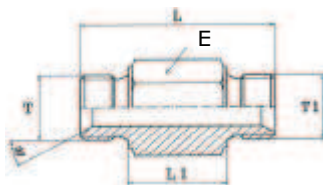
## NIPPLES PASSAPARETE



T	T1	L	L1	E	E1	D	d	P max	Codice
1/4	1/4	45	7,0	19				425	U1508013130
3/8	3/8	54	8,0	22				400	U1508017170
1/2	1/2	58,5	9,0	27				300	U1508021210
3/4	3/4	65	10,0	32				250	U1508027270
1	1	74	11,0	41				200	U1508033330
1.1/4	1.1/4	79	13,0	50				200	U1508042420

## PROLUNGA M/M

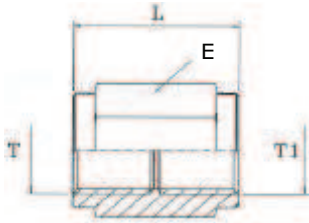
a richiesta



T	T1	L	L1	E	E1	D	d	P max	Codice
1/4	1/4	51	29,0	19				300	U1510013130
1/4	1/4	57	35,0	19				300	U1510013131
3/8	3/8	50	25,0	22				250	U1510017170
3/8	3/8	60	35,0	22				250	U1510017171
1/2	1/2	56	28,0	27				200	U1510021210
1/2	1/2	58	30,0	27				200	U1510021211
3/4	3/4	72	40,0	32				150	U1510027270
3/4	3/4	77	45,0	32				150	U1510027271
1	1	85	45,0	41				150	U1510033330

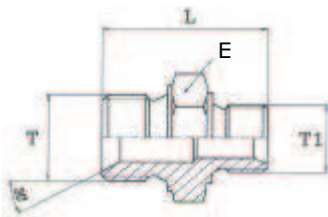


## PROLUNGA F/F GAS



T	T1	L	L1	E	E1	D	d	P max	Codice
1/8	1/8	30,0		14				250	U1511010100
1/4	1/4	35,0		19				300	U1511013130
3/8	3/8	40,0		22				300	U1511017170
1/2	1/2	34,0		27				250	U1511021210
3/4	3/4	50,0		32				200	U1511027270
1	1	43,0		41				200	U1511033330
1.1/4	1.1/4	47,0		50				150	U1511042420
1.1/2	1.1/2	70,0		55				150	U1511048480
2	2	57,0		70				150	U1511051510

## NIPPLES DI RIDUZIONE GAS



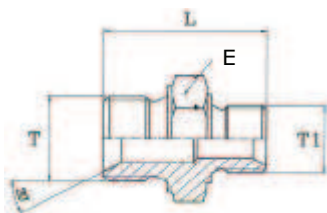
T	T1	L	L1	E	E1	D	d	P max	Codice
1/4	1/8	27,5		19				350	U1512013100
3/8	1/8	29,5		22				350	U1512017100
3/8	1/4	32,0		22				350	U1512017130
1/2	1/4	34,5		27				350	U1512021130
1/2	3/8	35,5		27				350	U1512021170
5/8	1/2	40,0		30				300	U1512023210
3/4	1/4	38,0		32				250	U1512027130
3/4	3/8	38,0		32				250	U1512027170
3/4	1/2	40,0		32				250	U1512027210
3/4	5/8	43,0		32				250	U1512027230
1	3/8	44,5		41				200	U1512033170
1	1/2	47,0		41				200	U1512033210
1	3/4	49,0		41				200	U1512033270
1.1/4	1/2	51,0		50				200	U1512042210
1.1/4	3/4	53,0		50				200	U1512042270
1.1/4	1	55,0		50				200	U1512042330
1.1/2	3/4	54,0		55				175	U1512048270
1.1/2	1	56,0		55				175	U1512048330
1.1/2	1.1/4	58,0		55				175	U1512048420
2	1.1/4	65,5		70				150	U1512051420
2	1.1/2	67,5		70				150	U1512051480





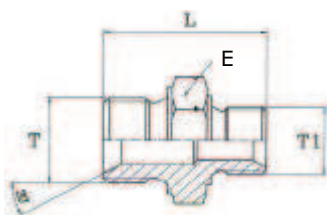
## NIPPLES DI RIDUZIONE GAS-METRICO

T	T1	L	L1	E	E1	D	d	P max	Codice
1/4	M10X1	28,0		19				425	U1512113100
1/4	M12X1.5	29,0		19				425	U1512113120
1/4	M14X1.5	30,0		19				425	U1512113140
1/4	M16X1.5	33,0		22				300	U1512113160
1/4	M18X1.5	33,0		24				300	U1512113180
3/8	M14X1.5	33,0		22				300	U1512117140
3/8	M16X1.5	35,0		22				300	U1512117160
3/8	M18X1.5	35,0		24				300	U1512117180
3/8	M22X1.5	36,5		27				250	U1512117220
1/2	M14X1.5	35,5		27				250	U1512121140
1/2	M16X1.5	37,5		27				250	U1512121160
1/2	M18X1.5	36,5		27				250	U1512121180
1/2	M22X1.5	38,0		27				250	U1512121220
3/4	M18X1.5	42,0		32				200	U1512127180
3/4	M22X1.5	42,0		32				200	U1512127220
3/4	M26X1.5	43,0		32				200	U1512127260
1	M26X1.5	42,5		41				200	U1512133260



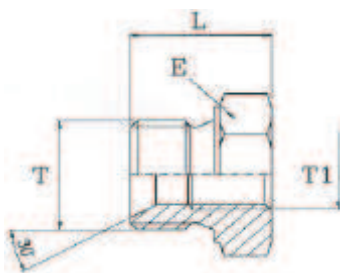
## NIPPLES DI RIDUZIONE METRICO-METRICO

T	T1	L	L1	E	E1	D	d	P max	Codice
M14X1.5	M10X1	28,5		19				350	U1512314100
M14X1.5	M12X1.5	30,0		19				350	U1512314120
M16X1.5	M12X1.5	31,0		22				350	U1512316120
M16X1.5	M14X1.5	31,0		22				350	U1512316140
M18X1.5	M14X1.5	34,0		24				350	U1512318140
M18X1.5	M16X1.5	36,0		24				350	U1512318160
M22X1.5	M16X1.5	37,0		27				350	U1512322160
M22X1.5	M18X1.5	37,5		27				250	U1512322180
M26X1.5	M22X1.5	38,0		32				200	U1512326220

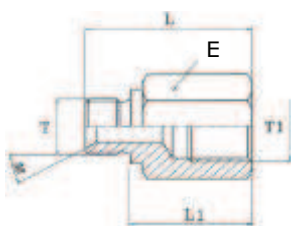


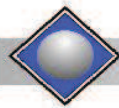
**TAPPO DI RIDUZIONE M/F**

T	T1	L	L1	E	E1	D	d	P max	Codice
1/4	1/8	18,0		19				175	U1518013100
3/8	1/8	21,0		22				175	U1518017100
3/8	1/4	21,0		22				175	U1518017130
1/2	1/4	23,5		27				175	U1518021130
1/2	3/8	23,5		27				175	U1518021170
3/4	3/8	27,0		32				175	U1518027170
3/4	1/2	27,0		32				175	U1518027210
1	3/8	30,0		41				150	U1518033170
1	1/2	30,0		41				150	U1518033210
1	3/4	30,0		41				150	U1518033270
1.1/4	1/2	33,5		50				125	U1518042210
1.1/4	3/4	33,5		50				125	U1518042270
1.1/4	1	33,5		50				125	U1518042330
1.1/2	3/4	35,5		55				125	U1518048270
1.1/2	1	35,5		55				125	U1518048330
1.1/2	1.1/4	35,5		55				125	U1518048420
2	1.1/4	42,5		70				100	U1518051420
2	1.1/2	42,5		70				100	U1518051480

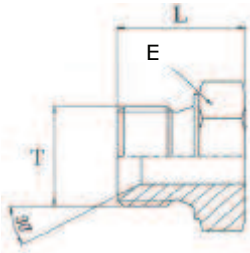
**PROLUNGA DI RIDUZIONE M/F**

T	T1	L	L1	E	E1	D	d	P max	Codice
1/8	1/4	29	19,5	19				300	U1519010130
1/4	1/8	30	19,5	19				300	U1519013100
1/4	3/8	33	22	22				300	U1519013170
1/4	1/2	37	26	27				300	U1519013210
3/8	1/4	35	22	22				250	U1519017130
3/8	1/2	39	26	27				250	U1519017210
1/2	1/4	36	22	27				200	U1519021130
1/2	3/8	36	22	27				200	U1519021170
1/2	3/4	42	29	32				200	U1519021270
1/2	1	45	31	41				200	U1519021330
3/4	1/4	40	23	32				200	U1519027130
3/4	3/8	40	23	32				200	U1519027170
3/4	1/2	43	26	32				200	U1519027210
3/4	1	50	33	41				200	U1519027330
3/4	1.1/4	48	32	50				200	U1519027420
1	3/4	50	31	41				200	U1519033270
1	1.1/4	51	32	50				200	U1519033420
1	1.1/2	52	32	55				200	U1519033480
1.1/4	3/4	53,5	32	50				150	U1519042270
1.1/4	1	53,5	32	50				150	U1519042330
1.1/4	1.1/2	53,5	32	55				150	U1519042480
1.1/2	1	55	33	55				150	U1519048330
1.1/2	1.1/4	55	33	55				150	U1519048420
1.1/2	2	65	43	70				150	U1519048510
2	1.1/4	68	43	70				150	U1519051420
2	1.1/2	68	43	70				150	U1519051480



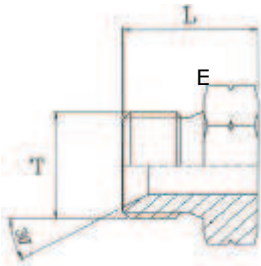


## NIPPLES A SALDARE GAS



T	T1	L	L1	E	E1	D	d	P max	Codice
1/8		15,5		14				425	U1525010000
1/4		18,0		19				425	U1525013000
3/8		21,0		22				400	U1525017000
1/2		24,0		27				350	U1525021001
3/4		27,0		32				250	U1525027000
1		30,0		41				250	U1525033000
1.1/4		34,5		50				200	U1525042000
1.1/2		35,5		55				175	U1525048000
2		41,0		70				150	U1525051000

## NIPPLES A SALDARE METRICO



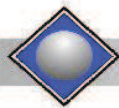
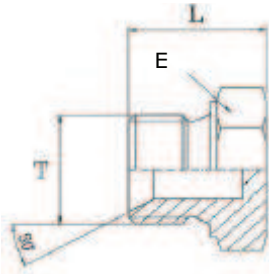
T	T1	L	L1	E	E1	D	d	P max	Codice
M10X1		14,0		14				425	U1525110000
M12X1,5		18,0		17				425	U1525112000
M14X1,5		18,0		19				425	U1525114000
M16X1,5		22,0		22				400	U1525116000
M18X1,5		22,0		24				400	U1525118000
M20X1,5		23,0		25				350	U1525120000
M22X1,5		23,0		27				350	U1525122000
M24X1,5		26,0		30				300	U1525124000
M26X1,5		26,0		32				250	U1525126000

## BORCHIA A SALDARE LUNGA

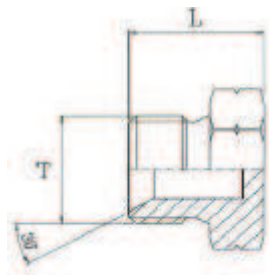
a richiesta



T	T1	L	L1	E	E1	D	d	P max	Codice
1/8		20,0				10	5,0	300	U1526010000
1/4		25,0				14	6,5	300	U1526013000
3/8		35,0				17	9,0	250	U1526017000
1/2		35,0				21	12,0	250	U1526021000
3/4		40,5				30	15,0	200	U1526027000
1		41,0				33	22,0	200	U1526033000
1.1/4		45,0				43	28,0	175	U1526042000
1.1/2		50,5				48	34,0	150	U1526048000
2		55,0				60	43,0	150	U1526051000

**TAPPO MASCHIO GAS**

T	T1	L	L1	E	E1	D	d	P max	Codice
1/8		14,5		14				425	U1527010000
1/4		18,0		19				425	U1527013000
3/8		21,0		22				400	U1527017000
1/2		23,5		27				350	U1527021000
5/8		26,0		30				300	U1527023000
3/4		27,0		32				250	U1527027000
1		31,0		41				250	U1527033000
1.1/4		33,5		50				200	U1527042000
1.1/2		36,0		55				175	U1527048000
2		41,0		70				150	U1527051000
2.1/2		40,0		85				150	U1527063000

**TAPPO MASCHIO METRICO**

T	T1	L	L1	E	E1	D	d	P max	Codice
M10X1		14,5		14				425	U1527110000
M12X1,5		19,0		17				425	U1527112000
M14X1,5		18,0		19				425	U1527114000
M16X1,5		21,0		22				400	U1527116000
M18X1,5		22,0		24				400	U1527118000
M20X1,5		22,0		27				350	U1527120000
M22X1,5		22,0		27				350	U1527122000
M24X1,5		22,0		30				300	U1527124000
M26X1,5		24,0		32				250	U1527126000
M30X1,5		28,0		36				200	U1527130000

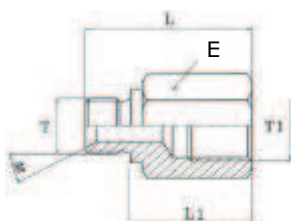
**TAPPO FEMMINA GAS**

T	T1	L	L1	E	E1	D	d	P max	Codice
1/8		11,0		14				425	U1530010000
1/4		13,5		19				425	U1530013000
3/8		15,0		22				400	U1530017000
1/2		17,5		27				350	U1530021000
5/8		16,0		30				300	U1530023000
3/4		17,5		32				250	U1530027000
1		19,0		38				250	U1530033000
1.1/4		23,0		50				200	U1530042000
1.1/2		23,5		55				175	U1530048000
2		25,6		70				150	U1530051000



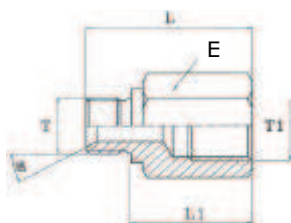
## PROLUNGA M/F GAS

T	T1	L	L1	E	E1	D	d	P max	Codice
1/8	1/8	25,0	17,0	14				300	U1545010100
1/8	1/8	50,0	42,0	14				300	U1545010101
1/4	1/4	30,0	19,0	19				300	U1545013130
1/4	1/4	42,0	31,0	19				300	U1545013131
3/8	3/8	35,0	22,0	22				300	U1545017170
3/8	3/8	54,0	41,0	22				300	U1545017171
1/2	1/2	45,0	31,0	27				250	U1545021210
1/2	1/2	60,0	46,0	27				250	U1545021211
3/4	3/4	47,0	31,0	32				200	U1545027270
3/4	3/4	75,0	58,0	32				200	U1545027271
1	1	50,0	32,0	41				200	U1545033330
1	1	90,0	71,0	41				200	U1545033331
1.1/4	1.1/4	62,0	42,0	50				150	U1545042420
1.1/4	1.1/4	92,0	72,0	50				150	U1545042421
1.1/2	1.1/2	62,0	40,0	55				150	U1545048480
1.1/2	1.1/2	96,0	74,0	55				150	U1545048481
2	2	110,0	85,0	70				150	U1545051510
2	2	180,0	155,0	70				150	U1545051511



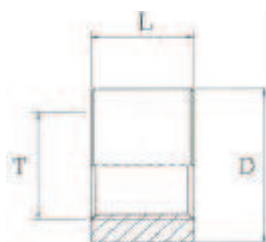
## PROLUNGA M/F METRICA

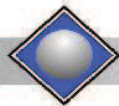
T	T1	L	L1	E	E1	D	d	P max	Codice
M12x1,5	M12x1,5	30,0	19,0	17				300	U1545112120
M12x1,5	M12x1,5	55,0	44,0	17				300	U1545112121
M14x1,5	M14x1,5	48,0	37,0	19				300	U1545114140
M14x1,5	M14x1,5	60,0	49,0	19				300	U1545114141
M16x1,5	M16x1,5	35,0	21,5	22				300	U1545116160
M16x1,5	M16x1,5	54,0	40,5	22				300	U1545116161
M18x1,5	M18x1,5	33,0	19,5	24				300	U1545118180
M18x1,5	M18x1,5	60,0	46,5	24				300	U1545118186
M20x1,5	M20x1,5	60,0	45,5	27				250	U1545120200
M22x1,5	M22x1,5	60,0	45,5	27				250	U1545122220



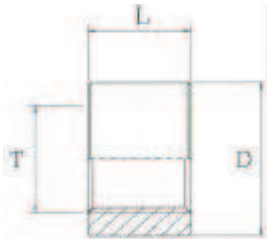
## BORCHIA A SALDARE GAS

T	T1	L	L1	E	E1	D	d	P max	Codice
1/8		14,0				20		425	U1550010140
1/4		16,0				22		425	U1550013160
3/8		17,0				26		400	U1550017170
1/2		18,0				30		350	U1550021180
5/8		20,0				32		300	U1550023200
3/4		20,0				38		250	U1550027270
1		25,0				46		250	U1550033330
1.1/4		26,0				56		200	U1550042420
1.1/2		30,0				62		175	U1550048480
2		30,0				70		150	U1550051510



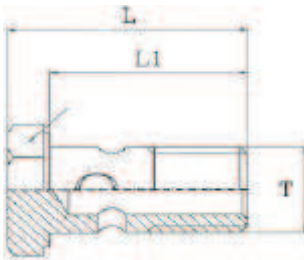


## BORCHIA A SALDARE METRICA



T	T1	L	L1	E	E1	D	d	P max	Codice
10X1		14,0				20		425	U1550110140
12X1,5		16,0				22		425	U1550112160
14X1,5		16,0				22		425	U1550114160
16X1,5		17,0				26		400	U1550116170
18X1,5		18,0				28		400	U1550118180
20X1,5		18,0				30		300	U1550120180
22X1,5		18,0				32		300	U1550122181
24X1,5		20,0				36		250	U1550124190
26X1,5		20,0				38		250	U1550126200

## VITE FORATA GAS



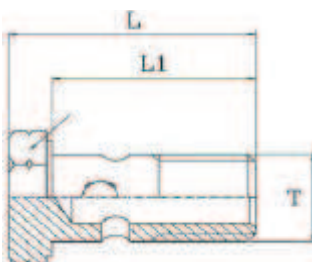
T	T1	L	L1	E	E1	D	d	P max	Codice
1/8		24,0	19,5	14				300	U1555010000
1/4		34,5	28,5	19				300	U1555013312
3/8		40,5	33,0	22				300	U1555017400
1/2		46,0	38,0	27				250	U1555021460
5/8		50,0	42,0	30				200	U1555023500
3/4		56,0	47,0	32				200	U1555027690
1		69,0	58,0	41				150	U1555033860

## VITE FORATA DOPPIA GAS



T	T1	L	L1	E	E1	D	d	P max	Codice
1/8		36,5	30,5	14				200	U1558110000
1/4		49,0	43,0	19				200	U1558113000
3/8		57,0	49,5	22				200	U1558117000
1/2		72,0	63,0	27				200	U1558121000
3/4		86,5	77,5	32				150	U1558127000
1		108,5	97,5	41				150	U1558133000

## VITE FORATA METRICA

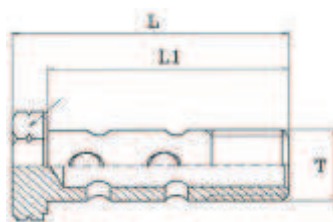


T	T1	L	L1	E	E1	D	d	P max	Codice
M10X1		24,0	19,5	14				300	U1555110250
M12X1.5		31,5	25,5	17				300	U1555112312
M14X1.5		34,0	28,5	19				300	U1555114330
M16X1.5		40,5	33,0	22				300	U1555116400
M18X1.5		44,5	36,5	24				250	U1555118440
M22X1.5		46,5	38,5	27				200	U1555122460
M26X1.5		56,0	45,5	32				200	U1555126560



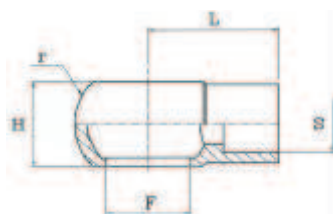


## VITE FORATA DOPPIA METRICA



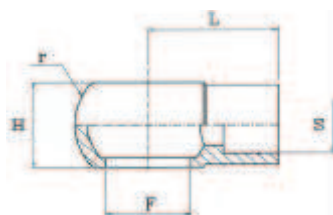
T	T1	L	L1	E	E1	D	d	P max	Codice
<b>M10X1</b>		36,5	30,5	14				200	U1558010000
<b>M12X1,5</b>		48,0	42,0	17				200	U1558012000
<b>M14X1,5</b>		49,0	43,0	19				200	U1558014000
<b>M16X1,5</b>		56,0	49,0	22				200	U1558016000
<b>M18X1,5</b>		65,0	54,0	24				200	U1558018000
<b>M22X1,5</b>		72,0	64,0	27				200	U1558022000

## OCCHIO SALDARE GAS



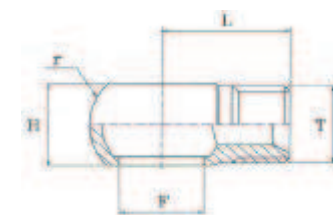
T	T1	L	L1	E	E1	D	d	P max	Codice
<b>1/4</b>	<b>6</b>	24,0	14		24			300	U1560013060
<b>1/4</b>	<b>8</b>	24,0	14		24			300	U1560013080
<b>1/4</b>	<b>10</b>	24,0	14		24			300	U1560013100
<b>3/8</b>	<b>10</b>	28,0	18		28			300	U1560017100
<b>3/8</b>	<b>12</b>	28,0	18		28			300	U1560017120
<b>1/2</b>	<b>15</b>	32,0	22		35			250	U1560021150
<b>1/2</b>	<b>16</b>	32,0	22		35			250	U1560021160
<b>3/4</b>	<b>20</b>	40,0	29		45			200	U1560027200
<b>1</b>	<b>27</b>	57,0	37		58			150	U1560033270

## OCCHIO SALDARE METRICO

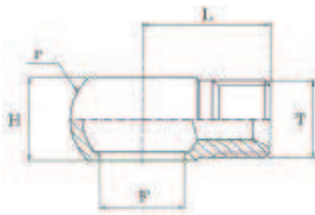


T	T1	L	L1	E	E1	D	d	P max	Codice
<b>14</b>	<b>10</b>	24,0	14		24			300	U1560114100
<b>16</b>	<b>12</b>	28,0	18		28			300	U1560116120
<b>18</b>	<b>12</b>	29,0	20		32			250	U1560120120
<b>18</b>	<b>15</b>	29,0	20		32			250	U1560120150
<b>22</b>	<b>16</b>	32,0	22		35			250	U1560122160
<b>26</b>	<b>20</b>	40,0	29		45			150	U1560128200

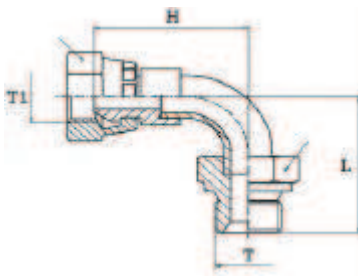
## OCCHIO FILETTATO GAS GAS/METRICO



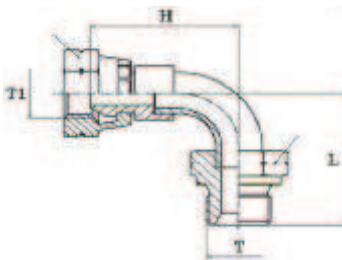
T	T1	L	L1	E	E1	D	d	P max	Codice
<b>1/4</b>	<b>1/4</b>	25,0	14		24			250	U1564013130
<b>1/4</b>	<b>M14X1.5</b>	25,0	14		24			250	U1564214140
<b>3/8</b>	<b>1/4</b>	25,0	18		28			250	U1564017130
<b>3/8</b>	<b>3/8</b>	28,0	18		28			250	U1564017170
<b>3/8</b>	<b>M18X1.5</b>	28,0	18		28			250	U1564217180
<b>1/2</b>	<b>3/8</b>	28,0	22		35			250	U1564021170
<b>1/2</b>	<b>1/2</b>	28,0	22		35			250	U1564021210
<b>3/4</b>	<b>3/4</b>	40,0	29		45			200	U1564027270
<b>1</b>	<b>1</b>	44,0	37		60			150	U1564033330

**OCCHIO FILETTATO METRICO**

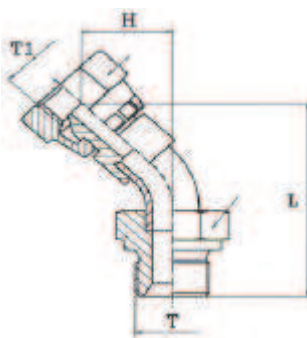
T	T1	L	L1	E	E1	D	d	P max	Codice
14	M14X1.5	24,0	15		24			300	U1564114140
18	M18X1.5	30,0	20		32			250	U1564118180
22	M22X1.5	35,0	23		35			200	U1564122220

**CURVA 90° M/F GIREVOLE GAS**

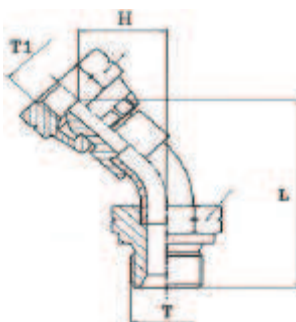
T	T1	L	L1	E	E1	D	d	P max	Codice
1/8	1/8	29,5	29,7	14	14			350	U1580001010
1/4	1/4	32,0	30,8	19	19			350	U1580001313
3/8	3/8	37,0	38,5	22	22			300	U1580001717
1/2	1/2	42,5	45,5	27	27			250	U1580002121
3/4	3/4	58,0	55,8	32	32			200	U1580002727
1	1	70,0	65,2	41	38			200	U1580003333
1.1/4	1.1/4	78,5	74,5	50	50			175	U1580014242
1.1/2	1.1/2	93,0	89,1	55	55			150	U1580014848
2	2	121,0	112,9	70	70			150	U1580015151

**CURVA 90° M/F GIREVOLE METRICO**

T	T1	L	L1	E	E1	D	d	P max	Codice
M14X1,5	M14X1,5	32,0	30,8	19	19			350	U1580101414
M16X1,5	M16X1,5	37,0	38,5	22	22			300	U1580101616
M18X1,5	M18X1,5	37,0	38,5	24	24			300	U1580101818
M22X1,5	M22X1,5	42,5	45,5	27	27			250	U1580102222
M26X1,5	M26X1,5	58,0	55,8	32	32			200	U1580102626

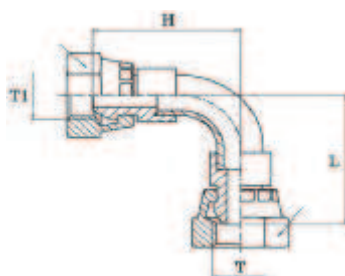
**CURVA 45° M/F GIREVOLE GAS**

T	T1	L	L1	E	E1	D	d	P max	Codice
1/4	1/4	44,1	17,1	19	19			350	U1582001313
3/8	3/8	52,0	21,0	22	22			350	U1582001717
1/2	1/2	53,3	23,8	27	27			300	U1582002121
3/4	3/4	66,4	25,9	32	32			250	U1582002727
1	1	85,9	33,9	38	38			200	U1582003333
1.1/4	1.1/4	81,3	31,8	50	50			200	U1582014242
1.1/2	1.1/2	101,9	39,9	55	55			175	U1582014848
2	2	132,2	52,2	70	70			150	U1582015151

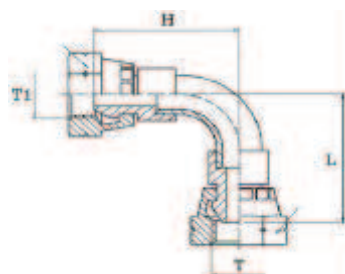
**CURVA 45° M/F GIREVOLE METRICO**

T	T1	L	L1	E	E1	D	d	P max	Codice
M14X1,5	M14X1,5	44,1	17,1	19	19			350	U1582001414
M16X1,5	M16X1,5	52,0	21,0	22	22			300	U1582001616
M18X1,5	M18X1,5	52,0	21,0	24	24			300	U1582001818
M22X1,5	M22X1,5	53,3	23,8	27	27			250	U1582002222
M26X1,5	M26X1,5	66,4	25,9	32	32			200	U1582002626

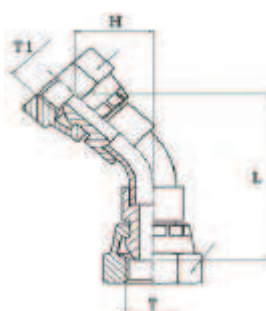


**CURVA 90° F/F GIREVOLE GAS**

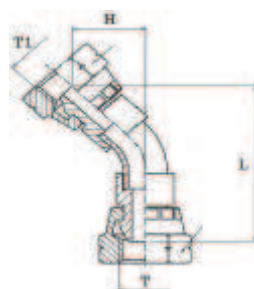
T	T1	L	L1	E	E1	D	d	P max	Codice
1/4	1/4	30,8	30,8	19	19			350	U1581001313
3/8	3/8	38,5	38,5	22	22			300	U1581001717
1/2	1/2	45,5	45,5	27	27			250	U1581002121
3/4	3/4	55,8	55,8	32	32			200	U1581002727
1	1	65,2	65,2	38	38			200	U1581003333
1.1/4	1.1/4	74,5	74,5	50	50			175	U1581014242
1.1/2	1.1/2	89,1	89,1	55	55			150	U1581014848
2	2	112,9	112,9	70	70			150	U1581015151

**CURVA 90° F/F GIREVOLE METRICO**

T	T1	L	L1	E	E1	D	d	P max	Codice
M14X1,5	M14X1,5	30,8	30,8	19	19			350	U1581101414
M16X1,5	M16X1,5	38,5	38,5	22	22			300	U1581101616
M18X1,5	M18X1,5	38,5	38,5	24	24			300	U1581101818
M22X1,5	M22X1,5	45,5	45,5	27	27			250	U1581102222
M26X1,5	M26X1,5	55,8	55,8	32	32			200	U1581102626

**CURVA 45° F/F GIREVOLE GAS**

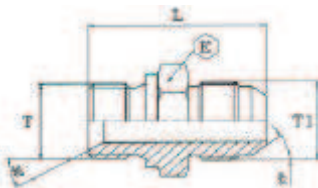
T	T1	L	L1	E	E1	D	d	P max	Codice
1/4	1/4	42,9	17,1	19	19			350	U1583001313
3/8	3/8	53,5	21,0	22	22			300	U1583001717
1/2	1/2	56,3	23,8	27	27			250	U1583002121
3/4	3/4	64,2	25,9	32	32			200	U1583002727
1	1	81,1	33,9	38	38			200	U1583003333
1.1/4	1.1/4	77,3	31,8	50	50			175	U1583014242
1.1/2	1.1/2	98,0	39,9	55	55			150	U1583014848
2	2	124,1	52,2	70	70			150	U1583015151

**CURVA 45° F/F GIREVOLE METRICO**

T	T1	L	L1	E	E1	D	d	P max	Codice
M14X1,5	M14X1,5	42,9	17,1	19	19			350	U1583101414
M16X1,5	M16X1,5	53,5	21,0	22	22			300	U1583101616
M18X1,5	M18X1,5	53,5	21,0	24	24			300	U1583101818
M22X1,5	M22X1,5	56,3	23,8	27	27			250	U1583102222
M26X1,5	M26X1,5	64,2	25,9	32	32			200	U1583102626

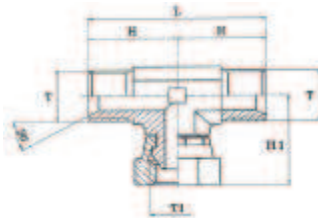


## NIPPLES DI GIUNZIONE GAS-JIC



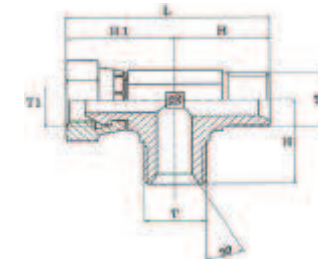
T	T1	L	L1	E	E1	D	d	P max	Codice
1/4	7/16	34,0		19				380	U1512413110
1/4	9/16	34,0		19				380	U1512413140
3/8	3/4	38,2		22				340	U1512417190
1/2	3/4	41,7		27				340	U1512421190
1/2	7/8	44,3		27				340	U1512421220
5/8	1.1/16	48,4		28				280	U1512423270
3/4	1.1/16	50,0		32				280	U1512427270
1	1.5/16	53,1		41				190	U1512433330
1.1/4	1.5/8	58,3		50				180	U1512442410

## ADATTATORE A "T" M/F/M GAS GIREVOLE



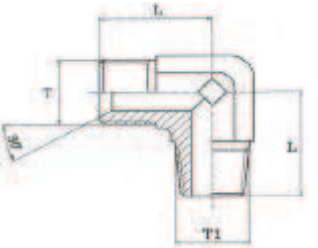
T	T1	L	L1	E	E1	D	d	P max	Codice
1/4	1/4	54,0	27,0	19			29,0	380	220S960131313
3/8	3/8	63,0	32,0	22			34,0	380	220S960171717
1/2	1/2	74,0	37,0	27			40,0	340	220S960212121
3/4	3/4	80,0	40,0	32			46,0	280	220S960272727
1	1	100,0	50,0	38			52,0	190	220S960333333
1.1/4	1.1/4	104,0	52,0	50			57,0	190	220S960424242
1.1/2	1.1/2	120,0	60,0	55			61,0	180	220S960484848

## ADATTATORE A "T" M/M/F GAS GIREVOLE

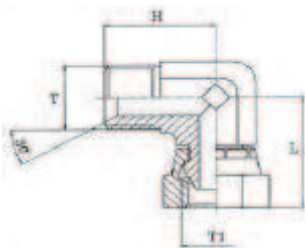


T	T1	L	L1	E	E1	D	d	P max	Codice
1/4	1/4	58,0	27,0	19			31,0	380	220S955131313
3/8	3/8	66,0	32,0	22			34,0	380	220S955171717
1/2	1/2	77,0	37,0	27			40,0	340	220S955212121
3/4	3/4	86,0	40,0	32			46,0	280	220S955272727
1	1	102,0	50,0	38			52,0	190	220S955333333
1.1/4	1.1/4	109,0	52,0	50			57,0	190	220S955424242
1.1/2	1.1/2	120,0	59,0	55			61,0	180	220S955484848

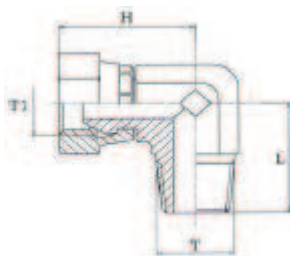
## ADATTATORE A 90° M/M GAS CONICO



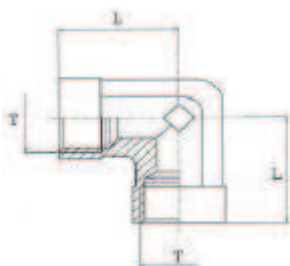
T	T1	L	L1	E	E1	D	d	P max	Codice
1/8	1/8	20,0		12				380	U1902001010
1/4	1/4	27,0		15				380	U1902001313
3/8	3/8	30,0		20				380	U1902001717
1/2	1/2	37,0		24				340	U1902002121
3/4	3/4	40,0		30				280	U1902002626
1	1	50,0		35				190	U1902003333
1.1/4	1.1/4	52,0		45				190	U1902004242
1.1/2	1.1/2	59,0		50				180	U1902004848

**ADATTATORE A 90° M/F GAS GIREVOLE**

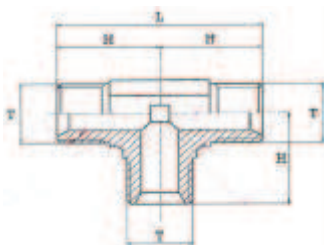
T	T1	L	L1	E	E1	D	d	P max	Codice
1/4	1/4	29,0	27,0	19				380	220S9501313
3/8	3/8	34,0	32,0	22				380	220S9501717
1/2	1/2	40,0	37,0	27				340	220S9502121
3/4	3/4	46,0	40,0	32				280	220S9502727
1	1	52,0	50,0	38				190	220S9503333
1.1/4	1.1/4	57,0	52,0	50				190	220S9504242
1.1/2	1.1/2	64,0	59,0	55				190	220S9504848

**ADATTATORE A 90° M CONICO-FEMMINA GAS GIREVOLE**

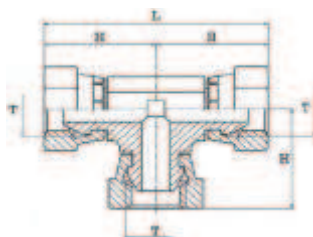
T	T1	L	L1	E	E1	D	d	P max	Codice
1/4	1/4	29,0	27,0	19				300	220S9801313
3/8	3/8	34,0	32,0	22				300	220S9801717
1/2	1/2	40,0	36,0	27				250	220S9802121
3/4	3/4	46,0	40,0	32				200	220S9802727
1	1	52,0	50,0	38				175	220S9803333
1.1/4	1.1/4	57,0	52,0	50				150	220S9804242
1.1/2	1.1/2	64,0	59,0	55				100	220S9804848

**ADATTATORE A 90° F-F FISSA GAS**

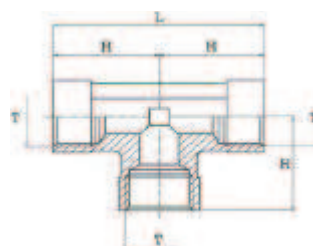
T	T1	L	L1	E	E1	D	d	P max	Codice
1/8		17,0		12				380	U1928001010
1/4		22,0		15				380	U1928001313
3/8		26,0		20				380	U1928001717
1/2		31,0		24				340	U1928002121
3/4		35,0		30				280	U1928002727
1		44,0		35				190	U1928003333
1.1/4		52,0		41				190	U1928004242

**ADATTATORE A "T" M/M/M GAS**

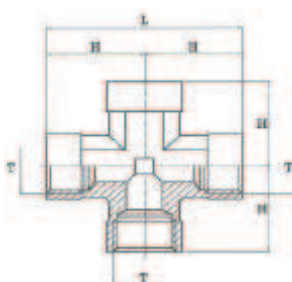
T	T1	L	L1	E	E1	D	d	P max	Codice
1/8		44,0	22,0	12				300	U19321101010
1/4		54,0	27,0	14				300	U1932131313
3/8		58,0	29,0	19				300	U1932171717
1/2		70,0	35,0	22				250	U1932212121
3/4		86,0	43,0	27				200	U1932272727
1		100,0	50,0	33				180	U1932333333
1.1/4		110,0	55,0	41				150	U1932424242

**ADATTATORE A "T" F/F/F GAS GIREVOLI**

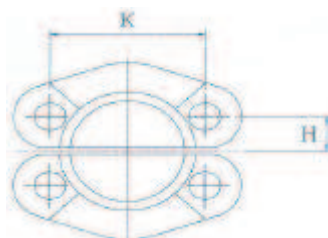
T	T1	L	L1	E	E1	D	d	P max	Codice
<b>1/4</b>		58,0	29,0	19				380	220S94413
<b>3/8</b>		68,0	34,0	22				380	220S94417
<b>1/2</b>		80,0	40,0	27				340	220S94421
<b>3/4</b>		91,0	46,0	32				280	220S94427
<b>1</b>		104,0	52,0	38				190	220S94433

**ADATTATORE A "T" F/F/F GAS FISSA**

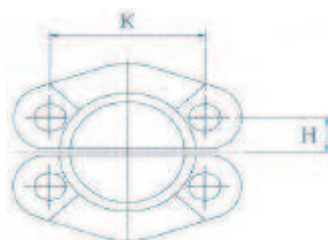
T	T1	L	L1	E	E1	D	d	P max	Codice
<b>1/8</b>		34,0	17,0	12				380	U1946101010
<b>1/4</b>		44,0	22,0	14				380	U1946131313
<b>3/8</b>		52,0	26,0	19				380	U1946171717
<b>1/2</b>		62,0	31,0	22				340	U1946212121
<b>3/4</b>		70,0	35,0	27				280	U1946272727
<b>1</b>		88,0	44,0	33				190	U1946333333
<b>1.1/4</b>		100,0	50,0	41				190	U1946424242

**ADATTATORE A "CROCE" F/F/F/F GAS FISSA**

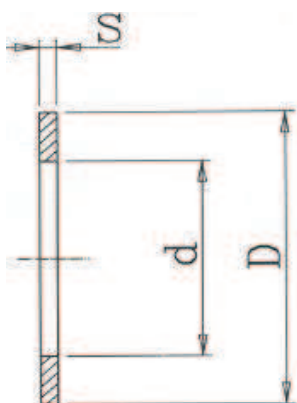
T	T1	L	L1	E	E1	D	d	P max	Codice
<b>1/8</b>		34,0	17,0	12				380	U1956000010
<b>1/4</b>		44,0	22,0	14				380	U1956000013
<b>3/8</b>		52,0	26,0	19				380	U1956000017
<b>1/2</b>		62,0	31,0	22				340	U1956000021
<b>3/4</b>		70,0	35,0	27				280	U1956000027

**SEMIFLANGE TAGLIATE 3000 psi (210bar)**

Flangia	Ø Flang.	K	H						Codice
1/2"	30,2	38,10	8,74						627SF3001
3/4"	38,1	47,63	11,13						627SF3002
1"	44,5	52,37	13,08						627SF3003
1.1/4"	50,8	58,72	15,09						627SF3004
1.1/2"	60,4	69,85	17,86						627SF3005
2"	71,5	77,77	21,44						627SF3006
2.1/2"	84,1	88,90	25,40						627SF3007
3"	101,6	106,38	30,96						627SF3008
3.1/2"	114,3	120,65	34,92						627SF3009
4"	127,0	130,18	38,88						627SF3010

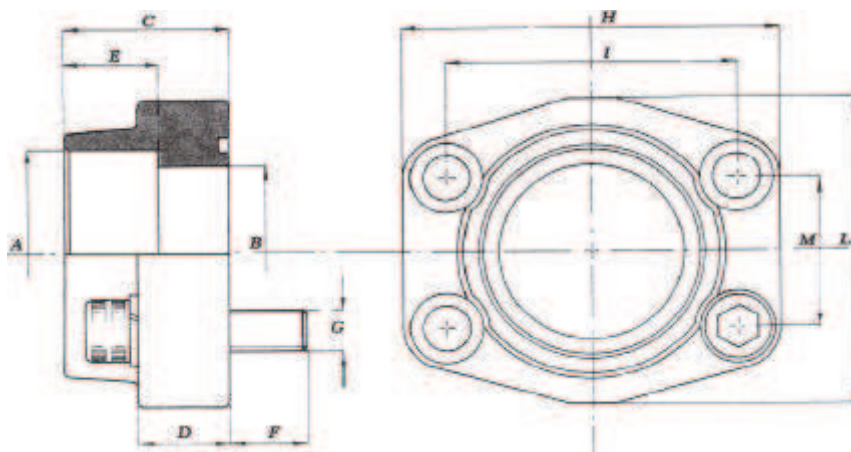
**SEMIFLANGE TAGLIATE 6000 psi (420bar)**

Flangia	Ø Flang.	K	H						Codice
1/2"	31,8	40,49	9,12						627SF6001
3/4"	41,3	50,80	11,91						627SF6002
1"	47,6	57,15	13,89						627SF6003
1.1/4"	54,0	66,68	15,88						627SF6004
1.1/2"	63,5	79,38	18,26						627SF6005
2"	79,4	96,82	22,23						627SF6006

**RONDELLA RAME METRICA-GAS**

d	D	S						Codice
10,0	14,0	1,5						U3521501014
10,0	16,0	1,5			1/8"			U3521501016
12,0	18,0	1,5						U3521501218
13,5	19,0	1,5			1/4"			U3521501319
14,0	20,0	1,5						U3521501420
16,0	22,0	1,5						U3521501622
17,0	22,0	1,5			3/8"			U3521501722
18,0	24,0	1,5						U3521501824
20,0	26,0	1,5						U3521502026
21,5	27,0	1,5			1/2"			U3521502127
22,0	28,0	1,5						U3521502228
24,0	30,0	1,5			5/8"			U3521502430
26,0	32,0	1,5						U3521502632
27,0	33,0	1,5			3/4"			U3521502733
28,0	34,0	1,5						U3521502834
30,0	36,0	1,5						U3521503036
33,5	40,0	1,5			1"			U3521503341
42,0	50,0	1,5			1.1/4"			U3521504250
48,0	56,0	1,5			1.1/2"			U3521504856
60,0	72,0	1,5			2"			U3521506072



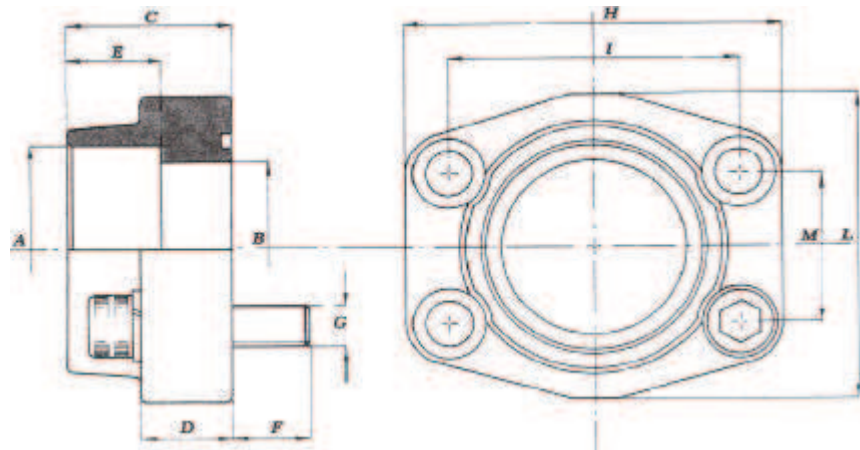


**FLANGE FILETTATE 3000 psi (210bar)**

P max (bar)	Codice	SAE 3000	Filetto A	B	C	D	E	F	G		H	I	L	M	OR
									Met.	UNC					
348	627CFS0801G	1/2	3/8	14	36	16	13	14	M 8	5/16	57	38,0	47	17,5	4075
348	627CFS0800G	1/2	1/2	14	36	16	15	14	M 8	5/16	57	38,0	47	17,5	4075
348	627CFS1001G	3/4	1/2	14	36	18	15	16	M10	3/8	66	47,6	49	22,2	4100
348	627CFS1000G	3/4	3/4	19	36	18	18	16	M10	3/8	66	47,6	49	22,2	4100
348	627CFS1021G	1	3/4	19	36	21	18	16	M10	3/8	71	52,4	53	26,2	4131
348	627CFS1020G	1	1	25	38	18	20	16	M10	3/8	71	52,4	53	26,2	4131
278	627CFS1041G	1 1/4	1	25	41	25	20	16	M10	3/8	80	58,7	69	30,2	4150
278	627CFS1040G	1 1/4	1 1/4	31	41	21	22	18	M10	3/8	80	58,7	69	30,2	4150
210	627CFS1061G	1 1/2	1 1/4	31	44	27	22	18	M12	1/2	94	70,0	77	35,7	4187
210	627CFS1060G	1 1/2	1 1/2	38	44	25	24	18	M12	1/2	94	70,0	77	35,7	4187
210	627CFS1081G	2	1 1/2	38	44	25	24	18	M12	1/2	103	77,8	89	42,9	4225
210	627CFS1080G	2	2	50	45	25	26	18	M12	1/2	103	77,8	89	42,9	4225
175	627CFS1101G	2 1/2	2	50	50	25	26	18	M12	1/2	115	89,0	101	50,8	4275
175	627CFS1100G	2 1/2	2 1/2	63	50	25	30	18	M12	1/2	115	89,0	101	50,8	4275
138	627CFS1121G	3	2 1/2	63	50	27	30	25	M16	5/8	135	106,4	124	62,0	4337
138	627CFS1120G	3	3	73	50	27	30	25	M16	5/8	135	106,4	124	62,0	4337
35	627CFS1141G	3 1/2	3	73	50	27	30	25	M16	5/8	152	120,7	136	70,0	4387
35	627CFS1140G	3 1/2	3 1/2	89	50	27	30	25	M16	5/8	152	120,7	136	70,0	4387
35	627CFS1161G	4	3 1/2	89	50	27	30	25	M16	5/8	162	130,0	146	77,8	4437
35	627CFS1160G	4	4	99	50	27	30	25	M16	5/8	162	130,0	146	77,8	4437
35	627CFS1180G	5	5	120	50	28	30	25	M16	5/8	184	152,4	180	92,0	4537

**FLANGE FILETTATE 6000 psi (420bar)**

P max (bar)	Codice	SAE 6000	Filetto A	B	C	D	E	F	G		H	I	L	M	OR
									Met.	UNC					
420	627CFS0400G	1/2	3/8	14	36	16	13	14	M 8	5/16	57	40,5	47	18,3	4075
420	627CFS0401G	1/2	1/2	14	36	16	15	14	M 8	5/16	57	40,5	47	18,3	4075
420	627CFS0401G1	3/4	1/2	14	36	19	18	16	M10	3/8	71	50,8	53	23,8	4100
420	627CFS0402G	3/4	3/4	19	36	19	18	16	M10	3/8	71	50,8	53	23,8	4100
420	627CFS0402G1	1	3/4	19	44	24	20	19	M12	7/16	80	57,1	69	27,8	4131
420	627CFS0403G	1	1	25	44	24	20	19	M12	7/16	80	57,1	69	27,8	4131
420	627CFS0403G1	1 1/4	1	25	44	27	22	22	M14	1/2	94	66,7	77	31,6	4150
420	627CFS0404G	1 1/4	1 1/4	31	44	27	22	22	M14	1/2	94	66,7	77	31,6	4150
420	627CFS0404G1	1 1/2	1 1/4	31	51	30	24	24	M16	5/8	106	79,4	89	36,7	4187
420	627CFS0405G	1 1/2	1 1/2	38	51	30	24	24	M16	5/8	106	79,4	89	36,7	4187
420	627CFS0405G1	2	1 1/2	38	58	37	33	32	M20	3/4	135	96,8	116	44,4	4225
420	627CFS0406G	2	2	50	58	37	33	32	M20	3/4	135	96,8	116	44,4	4225
420	627CFS0408G	2 1/2	2 1/2	63	75	45	35	35	M24	-	166	123,8	150	58,7	4275
420	627CFS0410G	3	3	73	90	55	40	55	M30	-	208	152,4	178	71,4	4337



**FLANGE SALDARE 3000 psi (210bar)**

P max (bar)	Codice	SAE 3000	A	B	C	D	E	F	G		H	I	L	M	OR
									Met.	UNC					
348	627CFS080S	3/8	17,5	14	36	16	18	14	M 8	5/16	57	38,0	47	17,5	4075
348	627CFS081S	1/2	21,6	14	36	16	18	14	M 8	5/16	57	38,0	47	17,5	4075
348	627CFS100S	3/4	27,2	19	36	18	18	16	M10	3/8	66	47,6	49	22,2	4100
348	627CFS102S	1	34,0	25	38	18	18	16	M10	3/8	70	52,4	53	26,2	4131
278	627CFS104S	1 1/4	42,8	31	41	21	20	18	M10	7/16	80	58,7	69	30,2	4150
210	627CFS106S	1 1/2	48,6	38	44	25	22	18	M12	1/2	94	70,0	77	35,7	4187
210	627CFS108S	2	61,0	50	45	25	24	18	M12	1/2	103	77,8	89	42,9	4225
175	627CFS110S	2 1/2	76,6	63	50	25	28	18	M12	1/2	115	89,0	101	50,8	4275
138	627CFS112S	3	90,5	73	50	27	28	25	M16	5/8	135	106,4	124	62,0	4337
35	627CFS114S	3 1/2	103,0	89	50	27	28	25	M16	5/8	153	120,7	137	70,0	4387
35	627CFS116S	4	115,5	99	50	27	28	25	M16	5/8	163	130,0	147	77,8	4437
35	627CFS118S	5	142,0	120	50	28	28	25	M16	5/8	184	152,4	180	92,0	4537

**FLANGE SALDARE 6000 psi (420bar)**

P max (bar)	Codice	SAE 6000	A	B	C	D	E	F	G		H	I	L	M	OR
									Met.	UNC					
420	627CFS400S	3/8	17,5	14	36	16	18	14	M 8	5/16	57	40,5	47	18,3	4075
420	627CFS401S	1/2	21,6	14	36	16	18	14	M 8	5/16	57	40,5	47	18,3	4075
420	627CFS402S	3/4	27,2	19	36	19	20	16	M10	3/8	71	50,8	53	23,8	4100
420	627CFS403S	1	34,0	25	44	24	22	19	M12	7/16	80	57,1	66	27,8	4131
420	627CFS404S	1 1/4	42,8	31	44	27	22	22	M14	1/2	94	66,7	77	31,6	4150
420	627CFS405S	1 1/2	48,6	38	51	30	24	24	M16	5/8	106	79,4	89	36,7	4187
420	627CFS406S	2	61,0	50	58	37	25	32	M20	3/4	135	96,8	116	44,4	4225
420	627CFS408S	2 1/2	76,6	63	75	45	28	35	M24	-	166	123,8	150	58,7	4275
420	627CFS410S	3	90,5	73	90	55	30	55	M30	-	208	152,4	178	71,4	4337